

awesomeart

P.O. Box 1160 Sebastopol CA 95473

www.awesomeart.org

Meeting: Thursday, April 16, 2009

Sebastopol Veteran's Memorial Bldg.

**DEMONSTRATION
Luncheon: 12 Noon**

Business meeting and demonstration following lunch.

The newsletter of the Art Workshop of Western Sonoma County
Edited by Andrea Way (email: andreaway@sbcglobal.net)

BOARD MEETING

The board meeting will be held April 16 at 10:00 am in the main room.

REFRESHMENTS

Sandwiches:

Jacque Mielke
Lorraine Stribling
Linda Sims
Dolores Delgado
Saroj Heron
Angel Fabela
Donna Solin
Dante Corsetti

Desserts:

Patricia Akay
Margot Comstock
Barbara Goodridge
Nancy Sanchietti
Judy Butler
Genie Becker
Brenda Ross MacKay
Jann Annestad

Please call or e-mail me if you have any question
sharonemiller@comcast.net, 829-0177 Thank you for volunteering.
Please have your offering at the meeting before noon.

Sharon Miller

PROGRAM

Demonstration by Brooks Anderson



Brooks Anderson was born in Santa Monica, California, in 1957. He graduated with a Bachelor of Fine Arts degree from California State University in Northridge, studying with established artists of the Los Angeles art scene: including Saul Bernstein, Watson Cross, Walter Gabrielson, Marvin Hardin, Joyce

Treiman, Hans Burkhardt, and Ernest Velardi. He studied in Maine with William Holst, a student of Hans Hofmann. His work is found in numerous collections, including the Philbrook Museum in Tulsa, and is included in the seminal book, Spirit of Place: Contemporary American Realism in the Landscape Tradition. In



E-NEWSLETTER



1996-97 Brooks lived in the south of France, completing fifty paintings of the region. Currently living in northern California, he devotes himself full time to producing landscape and seascape paintings. Learn more about Brooks at www.brooksandersonart.com.



MARCH PROGRAM

Critique by Thomas Creed

By Helen Shane

Thomas Creed's "creed" or mantra is checking for: composition, color, light, value, forms/shapes, lines and texture.

That framework was ever-present in his critique of a large number of paintings and even a photograph submitted by AWS members at the March meeting. Prominent in his search for compositional fidelity, he emphasizes a layout that will invite viewers into each painting – favorite means were roads

and waterways, with no hard edges to block "entry".

As a landscape painter, he was somewhat stumped, by his own admission, by the first piece up – an abstract done mostly in primary colors, with no blending or apparent color mixing.. He suggested a few pointers for the artist, in terms of value and color, such as color blending and mixing and fewer hard edges. He is definitely traditional, leaning toward representational, in his art.



Thomas frequently pointed out what he felt was the need for well-defined darks and lights in many of the paintings. He urged the use of more highlights in several paintings, to indicate water, sunlight and reflections. He reminded us that snow is never stark white; he said he uses, sparingly, yellow, to soften it. He also advocated under-painting or toning of the ground before making

definitive marks.

He likes using a palette knife to produce textures. This tool helps to make shapes, forms and even shadows on the canvas; it produces impressionistic and looser strokes. Toward that end he also suggested larger, flat brushes.

It is interesting that the two paintings he brought of his own work were somewhat impressionistic, while most of the pieces featured on his website seemed to be more closely representational and finely detailed. It is apparent that he explores and takes chances to discover varied results.



MEMBER PROFILE

Lorna Skinner

(AWS member since 1965)

We moved here in 1965 from Hagerstown, Indiana when my husband, Hal, got a teaching job at Sonoma State University. After about a week, much of our belongings were still scattered around the house. Answering a knock at the door, there stood Betsy Shimmel doing her duty as the Welcome Lady. Among other things on the floor was a painting of mine. She critiqued it and urged me to join AWS, which I did.



As a child I loved spending hours looking at beautiful works of art, drawing, and designing clothes for my paper dolls. My mother was an artist and was always an inspiration to me.

Hal and I each received a BA from Earlham College in Richmond, Indiana. My Minor was in Art History and Studio Art. In my senior year at Earlham I had a one-woman show of my four years of work.

Hal pursued his Doctorate at Indiana University. I did some substitute teaching but my main job was caring for our two children.

Paintings with my group of plein air artists is and always has been a learning experience and it has begun to make it difficult to paint any other way. For instance, painting from a photo seems to distort the light and color of our beautiful landscape scenery. The photo itself constrains the composition. Deciding what to include into the painting, the design of it, is often the most challenging part of plein air painting. I simply love it.

APRIL 10TH DEADLINE!

IT'S MORE THAN JUST YOUR PROPERTY TAXES. APRIL 10TH IS THE DEADLINE FOR YOUR APPLE BLOSSOM SHOW ENTRIES. THEY MUST BE POSTMARKED NO LATER THAN THAT DATE.

BE SURE TO SEND IN ONLY THE SQUARE ON THE ENTRY FORM THAT SAYS, "MAIL THIS FORM ONLY". PLEASE USE THE PROPER CATEGORIES AS SHOWN ON THE ENTRY FORM. MAKE YOUR CHECKS OUT TO AWS WITH \$15 FOR EACH ENTRY. INCORRECT FORMS WILL BE MAILED BACK TO YOU AND YOU WILL NOT BE ABLE TO SHOW THIS YEAR UNLESS YOU MAKE IT OUT PROPERLY AND RETURN IT BEFORE THE DEADLINE.

IT IS BEST TO READ AND FILL IN THE ENTIRE FORM FIRST. THEN CUT OUT THE APPROPRIATE SQUARE AND MAIL IT TO ANDREA WAY, 1 JENSEN DR., PETALUMA CA 94952. IF YOU HAVE ANY QUESTIONS PLEASE CALL ME AT 773-1277 OR E-MAIL ANDREAWAY@SBCGLOBAL.NET

ROSTER CHANGES

APPLE BLOSSOM SALES TAX

The Apple Blossom Entry form states that California sales tax (8%) will be added to the sales price of any paintings sold. I have received a letter from the State Board of Equalization notifying us that Sebastopol's sales tax will increase to 9.25% on April 1, 2009. Therefore we will have to collect that amount at this year's Apple Blossom Show.

Address change: Phyllis DeJoseph - 55 Sequoia Circle, Santa Rosa 95401, 544-2424

New Members

Alice Larsen
7777 Bodega Ave, B4
Sebastopol, CA 95472
707-823-3189
alartist@sonic.net

Marcy Basel
16950 Jennifer Drive
Occidental, CA 95465
707-874-2402
marcybasel@aol.com

ANNOUNCEMENTS

Marin Society of Artists next National Juries Exhibition will take place from August 2-30, 2009. Scott Shields, associate director and chief curator of the Crocker Art Museum in Sacramento is the juror. The deadline for entry is May 1. See www.marinsocietyartists.org or prospectus.

Entry Deadline May 29, 2009. **California Fine Art**, juried art show of the California State Fair seeks artworks done in the past two years by California artists ages 18 and up. All media including specific Class for plein air. Over \$20,000 in prizes. Entry fee \$20 per artwork. Submit digital images; see Handbook for details. Prospectus, Rules Handbook and Entry Form available at www.bigfun.org (Click on the word "Competitions" then scroll down to "Fine Art" and click on the word "Handbook"). On-line entry will be available in early April. Contact: California Fine Art fineart@calexpo.com (916)263-3161 Carol Buchanan, California Fine Art P.O. Box 15649 Sacramento, CA 95852

The Artist's Magazine 26th annual art competition. More than \$25,000 in cash prizes. Compete in 5 categories: portrait/figure, still life/floral, landscape/interior, abstract/experimental, animal/wildlife. Deadline May 1, 2009. See www.artistsnetwork.com/annualcompetition for details.

MONDAY MORNING PAINTERS

www.mondaymorningspainters.com

9am - 1pm. critique at 12:30pm

See website for more details and any last minute changes.

April 6

Empire Nursery

3747 Guerneville Rd, Santa Rosa

Critique at 12:30 at Picnic tables

Bedding plants, bamboo, fuchsias, fruit trees, water plants, Koi fish pond, water fall, large patio w/picnic table.

April 13

Dunnsden Vineyard, Private residence, Healdsburg

11180 Los Amigos Road, Healdsburg

Take 101 north of Santa Rosa, take the Arata Ln exit just north of Windsor. Stay straight to go onto Los Amigos Rd for 1 mile.

Hills, vistas, and vineyard views, 24 acres. Bathroom available.

April 20

Private Residence, Sebastopol

Private residence north of Sebastopol, 2878 and 2880 Sullivan Road, Sebastopol. Go west on Graton Rd from 116, turn left on Sullivan, turn right at the graveyard (there is a sharp left just after the graveyard and the right is where this curve is). Go up the gravel road and look for the address sign on the right. The residents' names are also on the sign -- Piers and Smith. Park around the entrance and please don't block the driveway. Bathroom available. Apple trees in bloom, HOPEFULLY, Mt St Helena backdrop.

April 27

Kozlowski Farms, Forestville

5566 Gravenstein Hwy (116), Forestville. Located between Graton and Forestville, watch for the signs on the west side of Hwy. Charming farmhouse, apple trees, outbuildings, valley & vineyard views. Don't park in front of the store. 12:30 Critique at picnic tables under trees.

AWS BOARD MEETING MINUTES

March 19, 2009

President, Katrina Small, called the meeting to order at 10:10 am.

Attending members were Fran Nielsen, Andrea Way, Lorraine Stribling, Susan Moore, Judy Maize, Helen Shane, James Reynolds, Gen Zorich, and Jacque Mielke.

Minutes for February, 2009 were read and approved.

REPORTS

President

The review of the constitution, bylaws and standing rules will be deferred until May.

Treasurer

Susan informed us that starting April 1, 2009, the Sebastopol city tax will be 9.25%.

Publicity

Helen is looking into a secured credit card for the club. Web site providers demand a credit card and no one should have to use their private cards.

Web site

Gen reported that the web site will be up and running by April.

Membership

Lorraine reported that there were 73 paid memberships out of 109 members

Mary Peelen, Dorothy Anderson and Georgia Katsanos are life members and it was suggested that Kae Prince be included into the category. A motion was made and passed that: **KAE PRINCE BE INCLUDED IN THE LIFE MEMBER CLASSIFICATION.**

Apple Blossom Festival

James Reynolds reported that there were no sponsors at this time but several had been contacted.

Monetary prizes were discussed and it was decided to leave it as it states in the registration form that "there may be monetary awards".

The meeting was adjourned at 11:45 am

Respectfully submitted, Jacque Mielke, Rec. sec.

Interested in joining us?

The AWS meets the third Thursday of each month from noon to 3 P.M. in the Sebastopol Veteran's Memorial Building to share art, do business and enjoy a program. Guests are welcome. A light buffet is served at noon, with refreshments and fellowship. The business meeting and program follow. Programs consist of demonstrations of artwork in various media, practical advice, helpful critiques and hands-on workshops. Contact Art Workshops of Western Sonoma County (AWS) membership committee:

Lorraine Stribling 775-3234 lornainestribling@comcast.net

Art Workshop of Western Sonoma County

P.O. Box 1160, Sebastopol, CA 95473

www.awsomeart.org

President: **Katrina Small** 620-0128 katrina@katgrafix.com

Vice Pres: **Judy Maize** 838-9049 artz4me@sonic.net

Treasurer: **Susan Moore** 857-3703 simart@comcast.net

Recording Sec: **Jacque Mielke** 824-9112 jadomielke@comcast.net

Corresp. Secretary: **Fran Nielsen** 823-3542 jwfnpw@sbcglobal.net

Parliamentarian: **Kae Prince** 869-2886

Publicity: **Helen Shane** 823-3744 shane5@sonic.net

Newsletter: **Andrea Way** 773-1277 andreaway@sbcglobal.net

Membership: **Lorraine Stribling** 775-3234

lorrainestribling@comcast.net

Refreshments: **Sharon Miller** 829-0177 sharonemiller@comcast.net

Art Venues: **Arlene Parnay** 829-2660 rnaparnay@webtv.net

Hospitality: **Betty Rhoades** 823-9669 ecrseb@hotmail.com

Take a little stroll down the

Primrose Path

Try the **Best** watercolor in the world

and get a

Free brush,

and

Free Shipping!



**ONLY \$29.95
SAVE 40%**

With this special offer you will receive 3 gorgeous DANIEL SMITH watercolors, a Black Gold Travel Brush #5 and **Free Shipping** - \$50.13 value.

Spring
Green

Hansa
Yellow
Medium

Quinacridone
Sienna

Use Offercode **SCCA0509** when ordering

Expires 05/31/09. Offer subject to change without prior notification. Free Shipping within USA.

DANIEL SMITH

800-426-6740

AWS thanks our sponsors for their support.

rileystreet art supply

HUGE **CANVAS** **SALE**
STRETCHED
73% OFF
2 WEEKS ONLY!!!
50%-

ART ALTERNATIVES GALLERY CANVAS

Gallery Stretched Canvas features a thick 1-1/2" edge. It is suitable for oil and acrylic painting.

SIZE	M.S.R.P.	DISC%	SALE PRICE
8X10	15.89	70%OFF	4.77
9X12	18.69	60%OFF	6.54
11X14	23.19	60%OFF	8.12
12X12	23.29	70%OFF	6.99
16X20	31.89	70%OFF	9.57
18X24	35.79	70%OFF	10.74
24X36	53.09	70%OFF	15.93
36X48	72.99	60%OFF	29.20
48X60	112.59	60%OFF	45.04
60X72	164.99	60%OFF	66.00

ART ALTERNATIVES STUDIO CANVAS

Studio Stretched Canvas features a staple free 7/8" edge and is suitable for oil and acrylic painting.

SIZE	M.S.R.P.	DISC%	SALE PRICE
4x6	4.39	60%OFF	1.76
8x8	6.29	60%OFF	2.20
8x10	6.19	70%OFF	1.86
9x12	7.29	60%OFF	2.92
11x14	9.59	70%OFF	2.88
12x12	9.69	70%OFF	2.91
12x16	10.09	60%OFF	3.53
16x20	13.19	60%OFF	5.94
18x24	16.69	50%OFF	8.35
24X36	29.19	50%OFF	14.60

STOCK UP AND SAVE!!!

BUY 20 OR MORE AND RECEIVE AN EXTRA 10% OFF THE SALE PRICES MIX AND MATCH

rileystreet art supply
THE CREATIVE SOURCE FOR CREATIVE PEOPLE
SAN RAFAEL 415-457-2787
SANTA ROSA 707-526-2416

APPLE BLOSSOM 2009 JUDGES

Wendy Brayton



"Brilliant white, it shimmered under the summer sun and breathed with a life of its own. It touched the sky and stretched as far as an eye can see, winding itself across the hills like a huge serpent. It was not silent, it bellowed with the wind. I was five years old when Christo's Running Fence appeared across my front yard. The memories of Christo's Fence have inspired me through my own artistic journey. The Running Fence has allowed me to dream of the limitless possibilities. It has taught me that art is not the sole product of inspiration but also includes determination, hard work and collaboration.

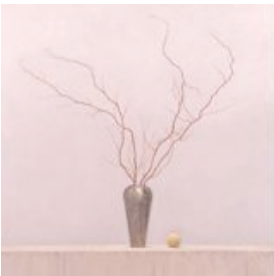


I am the second generation to be raised in Sonoma County. As a child, I had no idea how fortunate I was to be living in such a beautiful diverse part of California. It took me moving away to New York to finally understand. I returned home to Sonoma

County and enrolled in school to earn a degree in sculpture from Sonoma State University. Since graduation, I have become a plein air painter, spending three to four days a week painting on location. It is through these paintings I continue to rediscover the county I grew up in."



Willard Dixon



"My landscape painting has roots in the American tradition as practiced by artists such as Inness and Bierstadt, and by the Luminists, Kensett, Heade and Lane. I sometimes think that, for me, growing up on the east coast, it was the otherness, the unfamiliarity of the Western landscape which led to my long term interest and involvement with it. I'll never forget the impression it first made on me when, in the early sixties, I arrived in Wyoming, where I was to work on a ranch that summer. The wide open spaces, big sky, red earth and mountains, so different from the green, close muggy landscape of New Jersey.



Indeed I have come to know the West quite well and think of it as home, yet something of that freshness remains. When you come to know a place well it gets

inside you and enters your art quietly and naturally in certain ways without your awareness. I know the light, the skies, the water, the hills, grasses, trees and animals of northern California so well, they are my skies and hills, as my face is my own. We can't see our own faces directly, so the sense of place in my paintings is best perceived by others. I now have a landscape vocabulary learned at the feet of local hills. These things I can paint from memory, which gives me a flexibility in composing, the freedom to change a scene, or simply make one up. Knowing one set of natural forms intimately gives you an insight and understanding of many "cousin forms", perhaps even of form itself, those elements and harmonies which exist in all things. From an intimate knowledge of the particular springs an intimation of the universal. That particular sea, that sky, because they are just themselves perfectly, become complete, become all seas and skies. When a painting rings true in this way it gives us a sense of timelessness."

