



ART WORKSHOP OF WESTERN SONOMA COUNTY

## THURSDAY, JUNE 15 - AWS PICNIC!!

Riverfront Regional Park, 7821 Eastside Road, Healdsburg  
Carpool recommended • Regional Park pass or \$7 parking  
> There will be AWS signs - go to far end of parking lot by restrooms <

**12:00 - 2:00PM, or come early & paint/walk/chat!**

Significant Others welcome • Wear your nametag

**POTLUCK - Bring enough to share AND a serving utensil w/ your name on it**  
Paper plates, etc. provided, or bring your own place setting.

**JULY PROMPT: "HOME SWEET HOME"**



Paula Pearce presents the award to **Judy Boles** for her "Golden Gate Sunset" (12x24 oil), which she had encouraged Judy to enter.

## CONGRATULATIONS TO THE POPULAR VOTE WINNERS!

Thanks to the many hours **Paula Pearce, Susie Moore, and Nancy Sanchietti** spent sorting and counting all the ballots from our April 28-30 Apple Blossom Show, we learned at the May meeting who won this year's Popular Vote contest!



**ABS Chair Linda Reid** presents the ribbon to **Gail Radice** for her "Gravenstein Wash" (20x16 oil on linen panel).

## FROM OUR TRAVELING PRESIDENT JUDY GOLDBERG

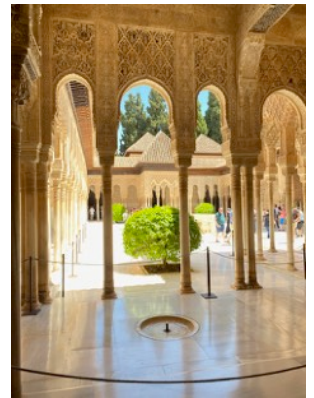


Here I am on the rooftop of Gaudi's Casa Batllo in Barcelona.

¡Hola! Compañeros artistas from a mainly rainy Spain.

This has been another enjoyable year of making and sharing our art, culminating in another equally enjoyable Apple Blossom Show. With so much great work on display, it was impossible to really choose a favorite. Kudos to all!

My experiences with preparing my work for the show led to thoughts on **procrastination** and my personal battle with that persistent demon. Last year, I was nervously attaching the hanging wire to my final piece on the morning of our intake! Silly rabbit. This year, determined to be a bit more of a tortoise, slow and steady, I had everything packed up and ready to deliver at least a day ahead. Even though I kinda missed the "rush," I know it's a better practice for me.



The stunning interior of Nasrid Palace in Granada's Alhambra.

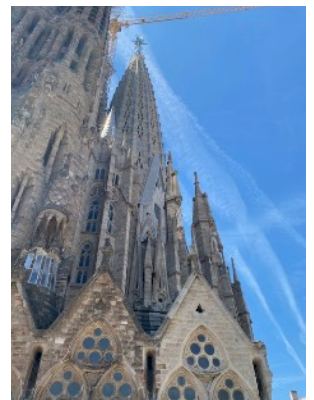
This got me thinking about work habits and how I might improve mine to become more productive. Reading about the creative processes of artists - famous, well known and not - I've learned that we artists are very individual in our methods.

***"Research is an important part of the artmaking process for painter, Wayne Thiebaud. Before he begins a new painting, he makes many sketches to work out his ideas...The artist calls his sketches 'thinking drawings.'"***

~ Scholastic Art, September 2019

***"Monet often worked directly on large-scale canvases out of doors, then reworked and completed them in his studio."***

~ Claude Monet (1840–1926) , Essay by Laura Auricchio



Agog at Gaudi's Sagrada Familia in Barcelona.

Being in Spain, I can't ignore Picasso! The exhibition of his earlier work in the Museo Picasso de Barcelona was mind bending! I was surprised that one of his creative approaches was to interpret a fellow artist's work in his own style, painting many canvases of the same basic composition and varying the details of imagery, value, color. I was not surprised that he made many drawings in planning his paintings. Those done for his masterpiece "Guernica" were masterworks themselves. Picasso also took a turn with pottery and printmaking, developing a new linocut technique of printing with translucent light ink on dark ground.

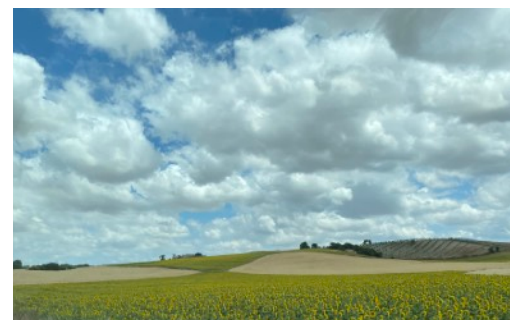
So...maybe it is not a waste of time to keep painting the same trees with variations or that I don't need to focus just on one pursuit and it's OK to experiment with the many different mediums that I find interesting. Also, I do plan to draw a lot more.



The huge Mezquita of Cordoba

All this *inspiración española* makes me excited to return home to my workroom and get busy.

**¡Nos vemos en junio!**  
Judy Goldberg



Seville, color shapes of sunflowers, olive trees and harvested hay



## PRESIDENT'S / VICE PRESIDENT'S NOTES • LONNA NECKER

Judy Goldberg is in Spain for the month of May for a long, country-wide adventure with her husband. Perhaps she will see Flamenco dancers and Roma culture a la “John Singer Sargent in Spain” (now at the Legion of Honor) and will regale us with their energy and beauty when she returns.

**At our May meeting**, we celebrated our Apple Blossom Show. Congratulations to **Linda Reid**, Chair (for the second year) of this major event. She, as well as all our wonderful volunteers, helped make it a financial success with \$995 from donated works of art to help reimburse our fees for the event. We were able to make \$348 from our raffle of paintings that were donated by last year's grand prize winners. The raffle monies will be donated to children's art classes at the Sebastopol Center for the Arts. We had a total of ten paintings sold. Winners were applauded and given their ribbons and cash. The cash awards are from monies bequeathed to AWS by long-time valued member **Jacque Mielke**. *(See photos of our happy artists on page 13.)*

And like butter, **Susan Barri** demonstrated her palette knife skills. Her painting designs, colors, and technique are intuitive and dynamic. What a joy to have a member who is so accomplished, talented, and joyful!

There will be no demonstration in June due to the Picnic, but in **July**, our demonstrator will be **Catherine Cruz** who will do Collage.

Our display of the May prompt, “The Beach,” along with other contributions this month was

quite lovely. The prompt for July is **Home Sweet Home**.

**Please note that due to the increased number of members and limited showing space, we feel it is now necessary to limit the number of paintings a member can bring to any meeting to ONE. Prompt or otherwise, just ONE please, and we can see how it goes.**

Our June picnic at Riverfront Regional Park near Windsor on Eastside Road is a pot luck with fellow members. **Paula Pearce, Susan Moore, Carol Mills** and **Rod Morgan** have volunteered to get there early and set up. They will also put signs up on the road, etc. As it is a county park, if you haven't purchased a year's pass, it is \$7 to park. Carpooling is recommended.

We will have more information about the **Ragle Park Gravenstein Fair Show** in our July newsletter.

And a huge **thank you to Carol Mills for obtaining a \$1,000 Community Investment Program Grant** from Linda Hopkins – quite an accomplishment.

Take care,  
Lonna



**Lonna ran the May Members' Meeting, shown here holding the mic as Deni explained the Venues. Questions? Call Deni!**

## **AWS BOARD MINUTES - MAY 18, 2023**

Members Present: Patty Bird, Deni Marrone, Gail Mardfin, Fran Nielsen, Lonna Necker, Linda L. Reid, Lorraine Stribling, Judy McFarland, Rhonda Johnston

Others Present: Carol Mills, Rod Morgan

- Meeting Called to order 10:41am by Vice President Lonna Necker. President Judy Goldberg is on vacation.

### **Vice President: Lonna Necker**

- Use of peg boards in AWS meeting room was discussed with the Art Center and permitted if we took down and put back the sound panels covering them before/after each meeting. A tall ladder would be needed to do this and was ruled out.
- A step stool is needed to hang art on the higher spots – ***don't take risky measures if the step stool is not present!***
- **Due to growing numbers of AWS members (meaning more work brought in) it was decided to limit art shown each meeting to ONE PER PERSON.** Motion: Linda L. Reid; Second: Carol Mills; Vote: Unanimous
- Carol Mills filed last of paperwork for the CIF grant, a community fund, and AWS will be receiving \$1,000.00 from Linda Hopkins, in charge of the 5<sup>th</sup> District of Sonoma County.
- Fran Nielson and Carol Mills met with Carmen regarding the **Gravenstein Fair** in August. The space, location, and cost for AWS has not been finalized and will help determine if AWS will participate.

### **Vice President Programs: Lonna Necker**

- July's Prompt: Home Sweet Home
- Visiting artist Catherine Cruz will be giving a demonstration on Collage for July's meeting.

### **Treasurer: Patty Bird**

- We had fewer pieces of art sold this year than last year but profits were the same.
- Total income \$7617.13 for the show and entry fees.
- \$2,505.00 entry fees for show.
- \$2735.00 entry sales total.
- \$363.75 cards and matted work sales.
- \$995.00 artist donation sales.
- \$348.00 raffle money - to be donated to the Children's Programs at the Sebastopol Center for the Arts.
- Effective balance \$6855.63
- Jacque Mielke Awards account \$4972.12

### **Membership: Lorraine Stribling**

- AWS has 3 new members: Aimee Tomczak, Linda Pierson, and Pat Landskron (returning).

### **Correspondence: Fran Nielsen**

- No well wishes were needed; All is Good!

### **Venues: Deni Marrone**

- Going forward, when signing up for a venue, SEE DENI.
- Sales have been made in all venues.

### **Publicity: Judy McFarland**

- "This has been a learning curve." Many former contacts are no longer valid. Judy will continue to do Publicity for AWS.

### **Communications: Gail Mardfin**

- New Member Package is in progress.
- AWS facebook has new additions. Take a look - it's a wonderful way to see who's new and to familiarize names with faces.

### **Apple Blossom Show: Linda L. Reid**

- There were only a few glitches in what was otherwise a very wonderful show!
- The non-alcohol drinks were not always put out for consumption.
- The overhead lighting wasn't properly addressed by SebARTs. Linda will set a meeting with the center for next year's ABS.
- The bathroom upkeep needs to be addressed with the Sebastopol Chamber of Commerce.
- Committee Chairs should all submit reports to Linda by June 4th. Linda will host a wrap-up event at her house on June 7th.
- **Thank you to Linda, who has agreed to be ABS Chair in 2024. She is seeking someone to work with her.**



**Treasurer Patty Bird explains the complicated ins and outs of the Apple Blossom Show finances to the Board. Thank you for all your time and effort, Patty!**

**HOORAY!**

**CONTINUED ON NEXT PAGE**

## AWS MAY BOARD MINUTES (CONT.)

### New Business:

- June Picnic is at the Riverfront Park from 12:00 to 2:00.
- Volunteers are needed and should arrive early (10:00am.) to reserve tables and help set up. Set up area is by the big BBQ's and bathrooms.
- It is recommended to carpool if possible, as parking is \$7 if you don't have a county parks pass.
- AWS member **Rod Morgan** attended the board meeting to show the committee proposed airbrush art work and graphic designs for a future demonstration.

11:59 a.m. Meeting adjourned by V.P. Lonna Necker.  
Submitted by Rhonda Johnston, Recording Secretary.



Carol Mills - "Valley Ford Llama" 11x20 watercolor



Barbara Evans -  
"Portrait of Anne" 12x9 pastel

*This is my mother-in-law and I'm going to give it to her in June as a surprise (she's in her 90's) [to hopefully hang in a cottage she recently bought in Virginia for family get-togethers.] I did it from a 1950's sepia tone photo, so I got to choose her dress color! I'm curious what the real color was, so we'll see if she remembers. It's mostly NuPastel and General's pastel pencils that I used for the fine detail like her eyes.*



Sandi Maurer - stoneware  
"Meditator" 6x2x3

"Anxious" 4x1.5x2.5

"Party Animal" 5.5x2x3

**Q: "How long did it take you to do that painting?"**

**A: "Oh, about 2 hours... and 40 years!"**

**CHECK OUT SUSAN BRADFORD'S "new and improved" website: [Susanbradfordpaintings.com](http://Susanbradfordpaintings.com). Susan will be demonstrating her 10-stroke painting technique at our August meeting.**



**Deadline: June 30**

***New & Old Members, time to set up  
or update your Members' Art page  
on [AWSOMEART.org](http://AWSOMEART.org)!***

Send up to three images - squarely taken photos of your work, along with title, medium, and dimensions (height x width) to [gail@PLPgraphicdesign.com](mailto:gail@PLPgraphicdesign.com). If you have a website or other online presence, include that link, too.

## The de Young Open



Building on the tremendous success of the inaugural *The de Young Open* in 2020, the second triennial of this juried community art exhibition will feature submissions by artists from the nine Bay Area counties, installed nearly edge to edge and floor to ceiling, maximizing the number of works displayed.

Any visual artist who is a full-time resident of these counties, is encouraged to apply. **All online submissions must be received between June 5 and June 18, 2023 (or when we reach 12,000 artists — whichever comes first).** Artists will be notified by August if their work has been accepted or declined. *Remember when our Carol Mills had a piece in the 2020 show?!*

**Find full submission guidelines on *The de Young Open* webpage below, under "Submission info." The submission portal link will be posted there on June 5.**

**<https://www.famsf.org/exhibitions/de-young-open-2023>**

### SEBASTOPOL VENUES

**May 18 - July 20**

#### **Coffee & Moore**

CURRENTLY: Rhonda Mertle & Deni Marrone

NEXT: Kathleen Andre

#### **Fandee's Restaurant**

CURRENTLY: Marilyn Dizikes

NEXT: Jan Blake

#### **Hair Masters**

CURRENTLY: Carol Mills & Deni Marrone

NEXT: Enid Barnes

#### **Hole in the Wall Restaurant**

CURRENTLY: Kathleen Andre, Enid Barnes, Kathy Byrne, Jerry Fabiano, Judy Goldberg, Carolyn Jarvis, Deni Marrone, Carol Mills, Linda Reid

NEXT: Elizabeth Gomes

#### **Sonoma Burger**

CURRENTLY: Enid Barnes

NEXT: Nancy Sanchiotti

#### **Specialty Center**

CURRENTLY: Linda Grainger

NEXT: AVAILABLE

#### **Umpqua Bank**

CURRENTLY: Marcella Ford

NEXT: AVAILABLE

**TO SIGN UP FOR VENUES, SPEAK DIRECTLY TO  
Venues Coordinator Deni Marrone  
Contact her at (408) 202-3875 or  
[denijomarrone@gmail.com](mailto:denijomarrone@gmail.com)**

### HOORAY FOR SALES IN OUR VENUES!

Recently **Linda Grainger** sold a painting out of the Specialty Center as a Mother's Day gift, and **Carol Mills** sold a second print out of Fandee's!

# SEBASTOPOL CENTER FOR THE ARTS

## ART SPOTS with LINDA LOVELAND REID\*



### THE LEISSRING COLLECTION

June 15 • 10:30am - 12:00pm

ONLINE VIA ZOOM • Senior price \$15

Register: [sebarts.org/classes-lectures/  
art-spots-leissring-loveland-reid](https://sebarts.org/classes-lectures/art-spots-leissring-loveland-reid)

Local “Renaissance man” Jack Leissring, MD, saved the McDonald Mansion from the wrecking ball, then hung his art collection there, now housed in a private gallery.

On staff at Memorial Hospital for 31 years, Leissring formed the Sonoma County Medical Society. Retired, he has devoted himself to painting, sculpting, printmaking, building, writing, and collecting.

Artists in his art collection include notables such as Duchamp’s brother Jacques Villon, John Sloan, James Spitzer, Warrington Colescott, local artist Maria de los Angeles, and Jerrold Ballaine, among others.

\* **AWS** knows Linda Loveland Reid as an artist/member and two-time chair of the Apple Blossom Show, but Linda’s interests run deep and wide - as an author, poet, play director, and more! She is an OLLI instructor for Sonoma State (Osher Lifelong Learning Institute) and Dominican Universities. She holds a B.A. in History and Art History from SSU, graduating cum laude. You will find Linda to be a very knowledgeable, entertaining and engaging lecturer!

## SebARTs Announces Its New EXECUTIVE DIRECTOR

**Serafina Palandech** will be the new Executive Director for the Sebastopol Center for the Arts starting this month. She comes to the position with deep commitment to the arts, service to the community, and experience in commercial and non-profit business administration.

In December 2022, the SebARTS Board brought in a new executive team to stabilize the organization, which had lost staff and suffered financially during the pandemic. Interim Directors Steve Markus and Sue Ellen McCann quickly went to work with the small, talented SebARTS staff and volunteers, creating a new organizational structure and fundraising strategy. In February, they launched the “Save the Center” campaign and by April had raised enough money to confidently begin the search for a new Executive Director.

For the past decade, entrepreneur Serafina has built memorable Sebastopol-based brands and sustainable companies including local Hip Chicks Farms, Bubbles Boba, and her newly opened Main Street store, Luminarium Curated Goods. As the Director of Finance and later Event Director at MZA Events, Serafina began her fundraising career and production of mass-participation charity events with AIDS Walk San Francisco, where she also served as chair of their Board of Directors. She is a graduate of UC Santa Cruz where she studied painting and women studies.

As Executive Director of SebARTS, Serafina will oversee organizational planning, programming, finances and operations of the organization. She will work with the Board to navigate the Center’s transition into its post-pandemic role as a world-class arts institution serving the San Francisco North Bay.

**AWS welcomes Serafina Palandech and wishes her all the best in her new key role.**



# MAY PROMPT: THE BEACH

**WE WANT TO SEE YOUR ART!** To have your work (prompt or not) appear in the newsletter, send a squarely-taken photo of it to [gail@PLPgraphicdesign.com](mailto:gail@PLPgraphicdesign.com) *no later than the Wednesday following the monthly meeting.* Always include title, dimensions (HxW) and medium.



**Judy Boles -**  
"Shore Walkers" 12x10 oil



**Chris Field -**  
"Coastal California" 11x14 watercolor



**Carol Mills -**  
"Wave Runners" 11x15 watercolor  
*At the beach with my youngest grandchildren.*



**Merrie Krisl -**  
"Beach" 6x6 collage  
*This was the first time I've tried something which was totally paper collage. I had great fun hunting through magazines for just the right color and value.*



# MAY ART DEMO WITH SUSAN BARRI

by Beverly Bird

AWS's very own Susan Barri shared her palette knife painting secrets in her May demonstration with us. Known for her beautiful painterly work, her presentation covered her inspiration, process, and technique.

In line with her preference for smaller formats, her first demo piece was a small vertical landscape – as she painted, she outlined her process and tools.

**Materials** - The paint should be thick oil or acrylic – she uses mostly Gamblin and Gamblin clear gel medium. She uses both oil and water-based oil paints. Her palette includes the primaries, which she mixes in a highly intuitive style.

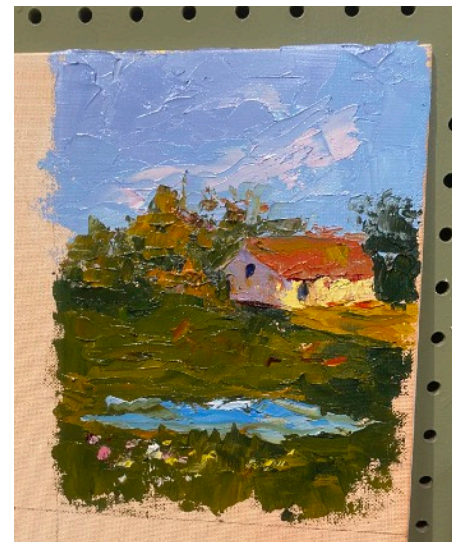
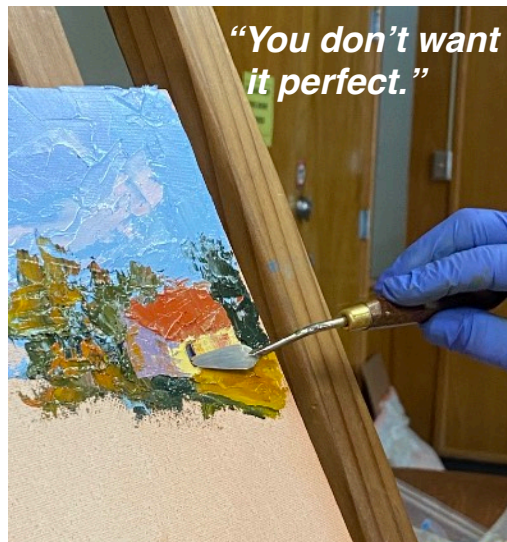
She has quite a number of palette knives, but generally uses a small, medium and larger – all of which she tends to hold while creating a piece. She finds that as they age and bend, they no longer provide the crisp edge needed for clean strokes. She frequently wipes them on a wad of paper towels. The support for the demo was canvas board, which she uses for experiments.

**Set-up** - Susan usually paints her canvases vertically on an easel, and works primarily in the studio from photos she has taken or found or are given to her. For the first demo, she made no

drawing and used no reference to paint a farm scene. Sometimes she starts with a sketch on the canvas; more often she will do a small color study.

**Approach** - Susan stressed the importance of using a light touch with the palette knife. To start, she slathered on thick blue tinged with white paint for the sky, swirling on a cloud with a light touch (like “frosting a cake.”) Working down, a barn was created with quick strokes designating the roof and two walls. After smooching in some background vegetation, she quickly added a field. Windows and flowers were added with quick little taps of dabs of paint. With the composition needing something in the foreground, someone suggested a pond, and she unhesitatingly added a pond, lightly stroking a little light blue across the field.

The second demo was a persimmon painting. She is a pro with round forms, and *(cont on next page)*



**Susan Barri, cont.**

explained that she mastered her technique by painting LOTS of persimmons, then pears, then apples using a combined frosting and scumbling technique. She used a photo reference, first laying



Susan has done various versions of this beautiful painting.

in a darker background, then moving on to the round fruit, then the topknot and finally the highlights.

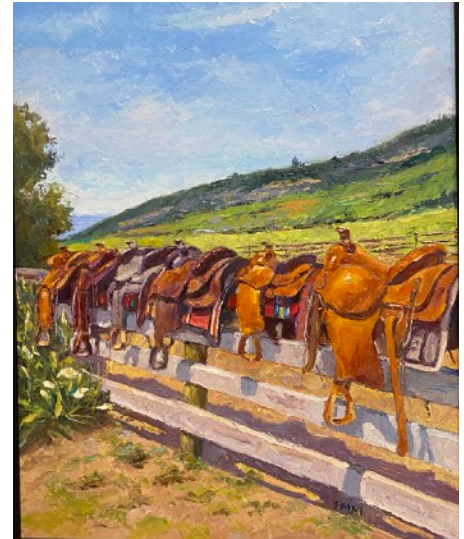
Using her light touch, she is able to add paint on top of fresh to paint in a

classic *a la prima* style. She heightens the drama by emphasizing contrast. Susan mixes Gamblin gel into her wet paints as she works – “when I remember,” she says. As a finishing coat, she’s been using Gamblin Gelkyd Lite for a shiny layer on a completely dry painting - or a varnish she found at

RileyStreet that she doesn’t really like as it darkened the painting.

Seeking instruction on the palette knife technique, Susan studied YouTube videos, and she highly recommends videos by Christian Jequel – whose videos are without instruction but accompanied by wonderful music. She also worked directly with Petaluma artist Phyllis Calvin Thomas, whom she greatly admires. Her presentation was a clear demonstration of her loose intuitive approach, which results in paintings with a fresh, painterly feel.

**“The time just flies. It’s so much fun.”**



A line-up of all the saddles on the Barri ranch in Ferndale, CA.

## Figure Drawing

Mondays 7-10 PM

Tuesdays 9 AM - 12 Noon

Thursdays, 7 - 9:30 PM

\$20 per person for OCA members, \$25 for non-members

### Occidental Center for the Arts

3850 Doris Murphy Court Occidental, CA  
(707) 874-9392



WHERE DINOSAURS COME ALIVE  
**SONOMA COUNTY FAIR**  
AUGUST 3-13, 2023



## A NOTE FROM THE EDITOR...

I love doing the newsletter and I do appreciate people's words of appreciation — but it turns out not everyone else appreciates getting those extra emails in their box, so if you want to reply, please *JUST HIT* "REPLY," *NOT* "REPLY ALL." Thanks. *(And if someone forgets, just delete it; it's not that big a deal.)* Maybe I should start BCC'ing everyone, but I think it's nice to know you are receiving it as part of a larger community.

I will be making my annual cross-country pilgrimage from June 7 to August 13, and will fill you in on my travels in the next newsletter. 'Til then, enjoy the summer — and send any pictures from the June Picnic or newsy notes to me to include, too! Thanks!

Love, xo gail

Excellent job of producing the news-letter Gail. One of the many things that struck me was looking at the photos of all our friends and seeing the big happy smiles. Everyone looks lovely and it shows us how much joy comes of being part of this wonderful art club.

Thank you,  
Jerry [Fabiano]

## Does everybody have their copy of the Art at the Source catalog??

This Open Studio Tour is the **first two weekends of June! Saturday and Sundays, 10am-5pm**. Choose from 113 artists from Petaluma to Healdsburg!

And be sure to visit the **FOUR AWS ARTISTS** on the Tour - they would LOVE to see a familiar face!

### **Beverly Bird #82**

sharing a studio at 4065 Acreage Lane, Sebastopol

### **Susan Bradford #107**

4031 Gravenstein Hwy N, Sebastopol  
(on the corner of 116 and Green Valley Rd)

### **Fran Nielsen #54**

8214 Covert Lane, Sebastopol

### **Linda Loveland Reid #9**

1730E. Cotati Ave., Penngrove

It's a great reason to cruise through the beautiful area and if you're not sure which studios to visit, be SURE to see the **Art At The Source exhibit at SebART** with an example piece by each artist on the tour. On view from **May 20 – June 11**. Have fun!



[artathesource.org](http://artathesource.org)

## **Congratulations to All the ABS Winners! Judge: Carole Wantanabe**

We acknowledged all ribbon holders who were present at the May meeting.

Among those missing was **Jerry Fabiano**, who won the esteemed **Founders' Award**.

**Cash awards: Best in Show \$400, Founders' Award \$300, 1st Place winners in each category \$100 each**

*(A complete list of winners can be found on our website: [awsomeart.org/apple-blossom-show](http://awsomeart.org/apple-blossom-show))*



**BEST IN SHOW:** ABS Chair **Linda Reid** presents the blue rosette to **Lorna Ho**.



**OILS:** 1st & 3rd **Nancy Sanchietti**, 2nd **Judy Boles**, Honorable Mentions, **Susan Barri** and **Gail Radice** (2).



**ACRYLICS:** 2nd **Linda Reid**, 3rd **Allene Donato**, Honorable Mentions, **Marilyn Dizikes**, **Lorna Ho**, **Enid Barnes**, **Jan Blake** and **Fran Nielson**.



**WATERCOLORS:** 1st **Judy McFarland**, 2nd **Chris Field**, Honorable Mentions, **Kathy Byrne**, **Carol Mills**, and **Linda Grainger**.



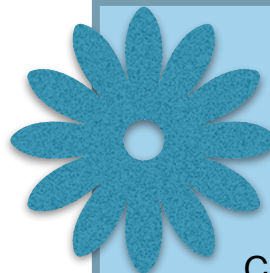
**PHOTOGRAPHY:** Sweeping the awards lineup, **Avinash Pandey!**



**PASTELS:** 1st **Rhonda Johnston**, 2nd & HM **Marcella Ford**, 3rd **Elizabeth Gomes**, Honorable Mentions, **Carol Mills**, **Lonna Necker**, and **Patty Byrd**.



**And that new category, ADDITIONAL MEDIA:** 1st **Patricia Marina**, 2nd **Sandi Maurer**, 3rd **Nancy Tulloh**, Honorable Mentions, collaborators **Linda Reid & Kim Winter**, and **Linda Donahue** (2).



### **WELCOME TO OUR NEW (or Somewhat-New) MEMBERS!**

Becky Brendlin • Santa Rosa  
Linda Carroll • Santa Rosa  
Catherine Devriese • Sebastopol  
Linda Dove-Pierson • Santa Rosa  
Denise Ferrere • Santa Rosa  
Pat Landskron (rejoined) • Healdsburg  
Joan Rumrill • Santa Rosa  
Aimee Tomczak • Sebastopol  
Tom Tuchel • Sebastopol



**April: MY PET PEEVE**

**May: THANKS! KEEP IT UP!**



Read ALL the signs, before deciding where to file your trash - and help consolidate if it's overflowing.

➤➤➤➤➤➤➤➤ If plates or cups are coated, they are NOT recyclable. Check for recycling logo before putting plastic in blue container; plastic silverware is NOT recyclable. Scrape extra food into compost. Soiled paper napkins ARE compostable. (Unfortunately, "compostable cups" are not compostable by Recology.) It's not really that hard - let's do it right!

No matter how much chocolate we eat, our earrings will still fit.

Pearls of Wisdom

**Riley Street**  
art supply

103 Maxwell Ct, Santa Rosa  
(707) 526-6421 • [www.RileyStreet.com](http://www.RileyStreet.com)  
Mon. - Sat. 9-5:30 | Sun. 11-4

**SAVE EVERY DAY**

1000'S OF HUES TO CHOOSE FROM

AS AN AWS MEMBER, REMEMBER TO ASK FOR YOUR 10% DISCOUNT ON ALL ITEMS NOT ALREADY DISCOUNTED OR ON SALE.

## WHAT'S GOING ON WITH THE GRAVENSTEIN FAIR?

Gravenstein Fair in Ragle Ranch Park, Sebastopol  
August 12-13 (set up Friday 8/11)



The Gravenstein Fair, which supports Farm Trails, has been a fun venue for AWS artists to sell paintings, cards, etc. in years past, and people have made money there!

If you've had experience selling at outdoor festivals, you know what you're getting in to... It's a lot of work and a lot of fun. You will need your own display stands, small a-frames, table, etc.

**Carol Mills & Fran Nielson** are heading things up this year, verifying where AWS would be situated on the grounds, etc., before they decide to definitely participate.

Your cost to participate would be \$40-\$50, plus 20% of sales go to AWS and Farm Trails; you keep 80%. **Patty Byrd** will be present to handle all sales.

**If you are interested - or want to know more - let Carol know at [carolmills202@gmail.com](mailto:carolmills202@gmail.com) or (707) 481-2592. Space will be limited, so let her know.**



### R.I.P. CHRISTINE McNAMARA

It is with sadness we share that Chris McNamara passed away on May 6th in her apartment in Pasadena, CA. She was an artist, a teacher, a volunteer and civil servant, a bringer of joy, a proud grandma, and above all else, patient and kind.

She spent her last days playing with her grandson, admiring nature, and making art.

**A memorial service will be held at Pleasant Hills Memorial Park in Sebastopol, CA on June 24th at 1pm.** All are welcome. She was predeceased by her husband just a few months ago.

Following the post by her son Nick on Facebook, she was remembered with love by many friends and fellow artists. *Chris will be greatly missed.*

**HAVE A FUN,  
SAFE,  
ART-FILLED  
SUMMER!**







